

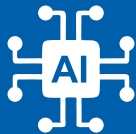
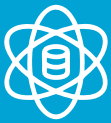


JKLU

ACCREDITED "A" GRADE BY NAAC

INSTITUTE OF ENGINEERING AND TECHNOLOGY

2025 - 2026



JK LAKSHMIPAT UNIVERSITY

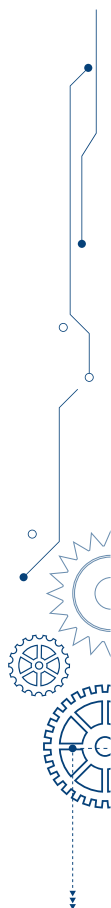
www.jklu.edu.in

AN INITIATIVE BY JK GROUP



INDEX

— About JK Lakshmipat University	04
— Legacy of Excellence and Nation Building	05
— From the Chancellor's Desk	06
— Vice Chancellor's Message	07
— Board of Management	08
— Institute of Engineering and Technology	10
— Director's Message	12
— Meet Your Mentors	13
— Innovative Pedagogy	15
— Programmes	16
— Admissions	19
— Fee Structure	20
— Scholarships	21
— Academic Collaborations	22
• Student Mobility Programme with Top IITs, IIITs & Leading Global Institutions	23
• International Collaborations	24
— Placement Highlights	25
— Top Recruiters	26
— Advanced Labs	27
— Atal Incubation Centre -JKLU	29
— Campus Life	30
— Community & Clubs	31
— Festivals	32
— Modern Facilities	33
— JKLU Laureate Awards	34



About JK Lakshmipat University

Founded in 2011 by the 140-year-old JK Organisation (JKO), JK Lakshmipat University (JKLU) continues JKO's legacy of excellence and commitment to nation-building. Accredited with an 'A' grade by NAAC, JKLU is at the forefront of innovation, blending academia with industry through its interdisciplinary programmes in engineering, management, and design that prepare students to excel in an ever-evolving workspace.

JKLU's faculty includes accomplished scholars from globally renowned institutions such as the IIMs, IITs, NIDs, and other top universities worldwide. The university's curriculum focuses on interdisciplinary learning, hands-on projects, and practical problem-solving, providing students with the flexibility and choice of tools they need to address complex challenges and drive a meaningful change.

The university's strong industry connections, real-world projects, and immersive internships form a core part of the JKLU experience, bridging the gap between academic knowledge and practical application. Through strategic partnerships and exchange opportunities with leading institutions in India and abroad, students gain a global perspective that enriches their education and broadens their horizons.

At JKLU, students also benefit from access to cutting-edge centres such as the Centre for Critical Thinking and Communication, the Atal Incubation Centre, and the AIMA BizLab. These platforms foster innovation, entrepreneurship, and critical inquiry, encouraging students to explore new ideas and develop a problem-solving mindset.

With state-of-the-art facilities, a vibrant campus community, and a culture that nurtures talent, JKLU empowers students to become leaders, innovators, and changemakers, poised to make a positive impact on society.

The JKLU Edge



Heritage of Excellence:

JK Lakshmipat University (JKLU) is an initiative of the JK Group, continuing their 140-year legacy of excellence and nation-building.



Distinguished Faculty:

JKLU's faculty comprises experts and PhD holders from India's leading universities and institutions (IIM, IIT, NID) as well as top global institutions.



Exceptional Faculty-Student Ratio:

JKLU has a faculty-student ratio of 1:15 across major programmes, among the highest in Rajasthan, as certified by NAAC.



Innovative Curriculum:

JKLU offers an interdisciplinary curriculum combined with project-based pedagogy, preparing students to tackle real-world challenges with a holistic approach.



Semester Exchange Opportunities:

Students have multiple opportunities for semester exchanges at India's premier institutions such as IITs and IIITs, as well as leading global universities.



Recognised Excellence:

JKLU holds NAAC 'A' accreditation and is ranked among the top 50 universities in India according to the IIRF Ranking 2024.



Cutting-Edge Centres:

JKLU is home to the Centre for Critical Thinking and Communication, the Atal Incubation Centre, and the AIMA BizLab, offering students the resources and platforms to innovate and excel.



State-of-the-Art Facilities:

JKLU provides state-of-the-art facilities, labs, and studios, ensuring students have access to the latest technology and resources to support their academic and creative endeavors.

Legacy of Excellence & Nation Building

For nearly 140 years, the JK Organisation (JKO) has been a cornerstone of nation-building in India. With successful enterprises across various sectors, JKO has made significant contributions not just to the Indian economy but also to broader societal progress.

Established in 2011, JK Lakshmipat University (JKLU) carries forward JKO's legacy of excellence and commitment to nation-building.

JK Group



By integrating this rich heritage with its progressive educational practices, the university prepares future leaders dedicated to societal advancement.

The organisation's philanthropic spirit was shaped by its visionary leader, Late Lala Lakshmipat Singhanian (1910-1976), who was driven to create India's intellectual capital, particularly in education and healthcare. His son, Late Shri Hari Shankar Singhanian (1933-2013) continued this legacy of inspiration as President (Chairman) of JK Organisation and Chancellor of JKLU.

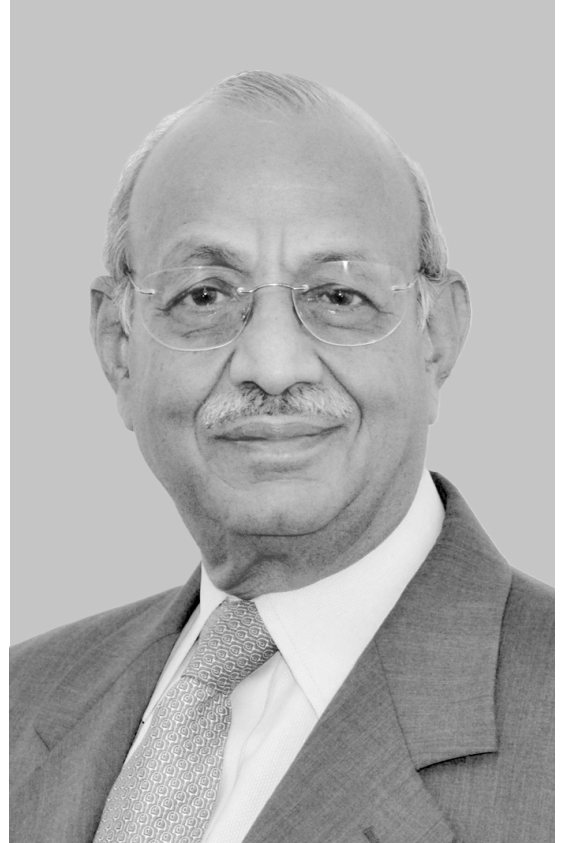
Today, the founders' vision and mission remain the cornerstone of the university's ethos, reinforcing its role in shaping the nation's future.

From the Chancellor's Desk

“ We, as an industrial conglomerate, have been steadfastly committed to education and meritocracy in the country for more than 140 years. In the world of JK Lakshmipat University, your passion and talents are not only nurtured but also encouraged to blossom. It's a realm where you can cultivate lifelong relationships with mentors and peers who will guide and support you at every step.

At JKLU, we view higher education not merely as a means to a degree but as a journey of personal and professional growth. We challenge our students to explore new ideas and perspectives, think critically and creatively, and embrace innovation and entrepreneurship.

Constantly striving to improve and innovate, we push the boundaries of what is possible and create new opportunities for our students to succeed. Investing in cutting-edge research and technology, forging partnerships with industry leaders, and expanding our programmes to meet the evolving needs of today's workforce are integral to our commitment. ”



Shri Bharat Hari Singhania

*Chancellor, JK Lakshmipat University
President, JK Organisation*

Vice Chancellor's Message

“At JK Lakshmipat University, we understand that engineering and technology are fundamental to modern innovation and societal advancement. At the JKLU Institute of Engineering and Technology, our programmes are thoughtfully designed to equip students not only with rigorous theoretical knowledge but also with the practical skills essential for leadership in today's swiftly evolving technological environment. Our curriculum integrates foundational engineering principles with the latest technological advancements, supported by state-of-the-art laboratories, advanced research facilities, and innovative technology centers.

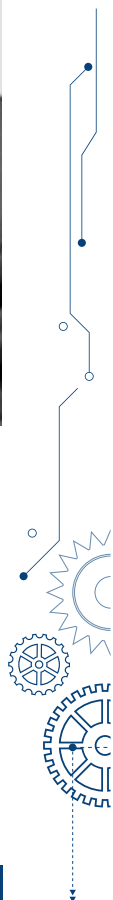
This holistic approach, coupled with our commitment to project-based learning, enables students to experiment, innovate, and achieve engineering excellence. The excellence of our programmes is further enhanced by our faculty's distinguished pedigree. Holding advanced degrees from top global engineering schools, our faculty members are not only dedicated educators but also active researchers who lead in technological innovation.

Their mentorship is crucial for preparing students to tackle real-world challenges with innovative and ethical solutions. Additionally, our semester exchange programmes with leading IITs, IIITs, and top global institutions provide students with unparalleled exposure and the opportunity to pursue study abroad opportunities, thereby expanding their academic and professional horizons.”



Dr. Dheeraj Sanghi

Vice Chancellor, JK Lakshmipat University



Board of Management



Shri Bharat Hari Singhania

*President, JK Organisation;
Chancellor, JK Lakshmipat
University*



Dr. R.P. Singhania

*Chairman & Managing Director,
JK Tyre & Industries Ltd;
Pro Chancellor,
JK Lakshmipat University*



Shri H.P. Singhania

*Chairman & Managing Director,
JK Paper Ltd;
Pro Chancellor,
JK Lakshmipat University*



Prof. Dheeraj Sanghi

*Vice Chancellor, JKLU; Former Dean,
Academic Affairs, IIIT Delhi;
Former Professor, IIT Kanpur;
Former Director, LNMIIT, Jaipur &
Punjab Engineering College, Chandigarh*



Smt. Vinita Singhania

*Chairperson & Managing Director,
JK Lakshmi Cement Ltd.*



Shri Surendra Malhotra

*Former MD, Orissa Synthetics
Limited, Senior Management and
Engineering Professional*



Dr. S. Chouksey

*Advisor, JK Lakshmi Cement Ltd.,
Delhi; Former President of Cement
Manufacturers Association;
Former Chairman, National Council
for Cement and Building Materials.*



Dr. Ashutosh Sharma

*Institute Chair Professor & INAE Visvesvaraya
Chair Professor, IIIT Kanpur; Former Secretary,
Department of Science & Technology,
Government of India, New Delhi
(Padma Shri Awardee)*



Dr. Pramath Raj Sinha

*Founding Dean, ISB Hyderabad;
Founder and Trustee, Ashoka
University; Founder & Managing
Director, Nine Dot Nine Mediaworx*



Shri Saurabh Srivastava

*Co-Founder & Former Chairman,
NASSCOM (Padma Shri Awardee)*



Shri Sanjay Jain

*Former Managing Director, Global
Capability Network, Accenture*



Shri Ajay Shankar

*I.A.S., Former Secretary (Industry)
to Government of India*



Shri Prem Singh

*President (Group HR),
JK Organisation;
National President – NHRDN*



Shri KK Maheshwari

*Officiating Registrar,
JK Lakshmipat University*



Smt. Renu Sud Karnad

*Non-Executive Director and
Former MD, HDFC Ltd.*



Dr. Om Prakash Bairwa

*Commissioner, College Education
(Nominee, Govt. of Rajasthan)*

About Institute of Engineering And Technology (IET)

The Institute of Engineering and Technology (IET) at JK Lakshmipat University, Jaipur (JKLU) is committed to delivering top-tier engineering education that goes beyond conventional boundaries. Supported by distinguished faculty members, IET creates an optimal learning environment with advanced laboratories, robust academic partnerships, and extensive resources, enabling students to delve into cutting-edge fields such as AI, ML, Robotics, IoT, and Data Science.

IET provides comprehensive undergraduate B.Tech programmes in Computer Science and Engineering, Artificial Intelligence, Data Science, Cyber Security, Design, and VLSI Design. It also offers a postgraduate M.Tech programme in Computer Science and Engineering and PhD in Computer Science and Engineering, Electrical and Electronics Engineering, Mechanical Engineering and Mathematics.

The B.Tech programmes include semester study opportunities at prestigious IITs, IIITs, and other leading global institutions, enriching students' academic and cultural experiences. The institute is equipped with state-of-the-art laboratories. Additionally, it provides minors in design, mathematics, entrepreneurship, banking and fintech, and robotics, preparing students for dynamic and successful careers in engineering and technology, while ensuring a deep understanding of both foundational and emerging areas.

HIGHLIGHTS



Exceptional Faculty-Student Ratio: IET maintains a 1:15 faculty-student ratio, one of the best in the region, facilitating personalised mentorship and academic guidance from faculty drawn from IITs and other prestigious universities worldwide.



Global Academic Partnerships: Facilitated by JKLU's strategic partnerships, students have the opportunity to spend up to four semesters at leading institutions like IITs, IIITs, and other globally recognised universities, enriching their academic and cultural experiences.



Robust Entrepreneurial Support: The Atal Incubation Centre serves as a catalyst for transforming innovative ideas into successful businesses, providing comprehensive support from ideation to funding. This fusion of academic rigor with practical application empowers students to launch and lead successful ventures.



Advanced Curriculum Design: The curriculum at the Institute of Engineering and Technology adheres to global standards and features innovative pathways in specialised fields such as Data Science, Cyber security, AI, Cloud Computing, and VLSI, preparing students to lead in technological advancements.



State-of-the-Art Facilities: The institute's facilities include the AI Lab, Data Science Lab, Computer Network and Cyber Security Lab, AR/VR Lab, Smart Grid Lab, Circuit Design and VLSI Lab, Embedded System and IoT Lab, Robotics and Automation Lab, and Software Engineering Lab.



Interdisciplinary Learning: The curriculum emphasises an interdisciplinary approach with specialised tracks in CSE, CSE & AI, Data Science, and Cyber Security, equipping students with versatile skills and a deep understanding of modern technological challenges.



Diverse Minors: A diverse range of minors in Design, Banking & Fintech, Entrepreneurship, Robotics, and Mathematics are available to broaden professional skills and enhance cross-disciplinary capabilities.

Director's Message

Dr. Renu Jain

**Dean & Officiating Director
Institute of Engineering and Technology**

Ph.D., Computer Science & Engineering, BITS, Pilani

M.Sc. Mathematics, IIT Delhi

Computer-Based Information Systems Software Technology, McGill University, Canada



In my role as the Dean of the Institute of Engineering and Technology (IET) at JKLU, it is with great pleasure that I convey the spirit of a thriving academic community where both students and faculty witness the realisation of their dreams through a commitment to excel.

Our distinguished faculty, characterised by experience and passion, collaborates with students, providing guidance and mentorship to nurture their ambitious ideas. The curriculum at JKLU is designed to be flexible and interdisciplinary, encompassing courses in management, design, critical thinking, and programming skills honed through weekly programming contests. Additionally, we ensure a well-rounded education by incorporating core and elective courses from various disciplines.

To enrich the learning experience, we regularly organise talks, workshops, and interactions with experts from academia and industry. This exposure equips our students with knowledge from diverse perspectives, fostering a holistic approach to education.

At JKLU, we recognise the unique talents within each student and are dedicated to inspiring, challenging, and unlocking their full potential through personalised mentorship. Whether it be career exploration, higher studies, personal development, or unconventional pursuits, our faculty members serve as motivators and guides, instilling confidence and a love for learning.

To facilitate a seamless transition for new students, we have implemented a peer-level mentoring system, connecting high performers from senior batches with junior students in laboratories. This creates a supportive environment for open communication, enabling newcomers to seek assistance without hesitation.

Believing in the untapped potential of every student who joins our institution, we are committed to providing the right guidance through mentors who understand their dreams. We are here to encourage you to dream big, and set goals, and we will stand by you as mentors to help you achieve them.

Best Wishes,
Dr. Renu Jain

Meet Your Mentors



Dr. Renu Jain
Dean & Officiating Director,
Ph.D. BITS, Pilani
NLP: Sentiment Analysis, Relation
Extraction; Algorithms



**Dr. Jyoti Prakash
CR Naidu**
Dean- Research & Development,
Ph.D. University of Toronto, Canada
Engineering, Robotics, AI, Automation
Design Implemented Design for
Patentability approach



Dr. Umesh Gupta
Dean- Academics, Professor &
Controller of Examinations,
Ph.D. Rajasthan University
Winner of Outstanding Scientist



Dr. Amit Kumar Sinhal
Professor,
Ph.D. Rajeev Gandhi Technical
University, Bhopal
AI-ML, AR-VR, Software
Engineering



Dr. Ajai Jain
Professor- Emeritus,
Ph.D. McGill University, Montreal, Canada
Natural Language Processing,
Machine Translation, VLSI Design,
Computer Architecture, Parallel
Processing



Dr. Devika Kataria
Professor,
Ph.D IIT, Kanpur Digital Systems Design,
Industrial IoT, CyberSecurity US patent
granted for "Smart Monitoring of
Belt Tension and Slip"



Dr. S.Taruna
Professor,
Ph.D. Banasthali University
Sensor Networks, Data Mining &
Machine Learning, Cloud Computing
Patent granted for System and
Apparatus for Stimulation of BioMass
Growth using Internet of Things (IoT)



Dr. Deepika Prakash
Associate Professor,
Ph.D. Delhi Technological
University Data Engineering;
Enterprise Systems Winner of
Best Academician of the
Year 2018



Dr. Jaya Gupta
Associate Professor,
NET, Ph.D. Rajasthan University
Special function, Integral transforms,
statistical distribution theory
Winner of Excellence in Education
Award by ITS Foundation



Dr. Kshitiz Verma
Associate Professor,
Ph.D. Universidad Carlos III
de Madrid, Spain
Deep Learning & its application to
law Advisory Board member for
'In-Depth EU AI Toolkit' project at
University of Cambridge, UK



**Dr. Mohd. Shahnawaz
Khan**
Associate Professor,
Ph.D. Dr. B R Ambedkar University, Agra
Organic Synthesis, Green
Chemistry, Medicinal Chemistry,
Heterocyclic Chemistry



Dr. Pranab Roy
Associate Professor,
Ph.D. IIST, Shibpur Published
patent on "System for Intelligent
Net Terminal Relocation
in DMFB and Method Thereof"



Dr. Richa Sharma
Associate Professor,
Ph.D. Dr. B R Ambedkar University, Agra
Queueing theory, Reliability theory,
Network Theory, Stochastic models
and Probability theory
Winner of Best Researcher
Award in 2020 and 2023



Dr. Arpan Gupta
Assistant Professor,
Ph.D. LNMIIT, Jaipur
Video Analytics, Computer
Vision and Deep Learning
Published articles in
SCI Q1 Journal



Dr. Anamika Satrawala
Assistant Professor,
Ph.D., MNIT Jaipur,
Internet of Things (IoT)



Dr. Gaurav Mani Khanal
Assistant Professor,
Ph.D. University of Rome,
Italy VLSI, Nanoelectronics,
Neuromorphic computing
Co-Principal Investigator
"Flagship Chip to Start Up" by
MEITY GOI



Dr. Hanuman Prasad Agrawal

*Assistant Professor,
Ph.D. Jagannath University,
Jaipur Power System,
EV Integration and IoT*



Dr. Mahesh Kumar Yadav

*Assistant Professor,
Ph.D. IIT, Kanpur
Phase-Change Heat Transfer,
Energy Systems, Hydrogen
Management and Mitigation*



Dr. Manushi Gupta

*Assistant Professor,
Ph.D. IIT (BHU)
Mathematical modelling*



Dr. Rabia Kamra

*Assistant Professor,
Ph.D. IIT, Delhi Published
a patent titled "Method for
Leveraging AI-Powered
Personalized Learning Tool"*



Dr. Rajlakshmi Nayak

*Assistant Professor,
Ph.D. IIT, Madras
Experimental and computational
fluid dynamics*



Dr. Ridhima

*Assistant Professor,
Ph.D. Punjab Engineering
College, Chandigarh
Machine Learning, Image
Processing*



Dr. Surbhi Chhabra

*Assistant Professor,
Ph.D. LNMIIT, Jaipur
Hardware Security, Digital
System Design*



Divanshu Jain

*Assistant Professor,
M.Tech. BITS, Pilani
Internet of Things, Digital
Circuits, Antenna Design*



Devendra Bhavsar

*Assistant Professor,
M.Tech. IIT, Bombay
Wireless Sensor Networks and
Algorithms Edge Computing*



Raushan Kumar

*Assistant Professor,
MTech (Computing & Mathematics),
IIT Palakkad, Kerala.
Computational Modelling & Simulations,
Graph Algorithms, Engineering
Optimization & Analytics*



Santosh Kumar Verma

*Assistant Professor,
Ph.D. (Pursuing), JKLU Jaipur,
MTech (IT), IIIT Allahabad.
Retroactive Data Structure Design,
Advanced Data Structures
and Algorithms*



Supriya Mishra

*Assistant Professor,
Ph.D. (Pursuing), NIT Surat,
MTech CSE, NIT Bhopal.
Databases and Spatial Data
Management*

Innovative Pedagogy

At JK LakshmiPat University (JKLU), we integrate cutting-edge teaching methods and a results-oriented approach to ensure that classroom learning becomes a dynamic journey of growth. Our advanced facilities and resources enable you to refine your learning, critical thinking, communication, and self-reflection abilities. Through our distinctive curriculum model, "Learning at JKLU," we foster a holistic learning environment that prepares students for diverse roles as versatile professionals and global leaders.

Reimagining Education

Diverse learning methodologies that foster endless opportunities.

No Boundaries

Learn from the best facilitators, practitioners, and teaching assistants on campus.

Autonomy and Flexibility

Choose what you want to study. Take charge of your learning. Enjoy the freedom to follow your curiosity and pursue interests.

Multidisciplinary Approach

Develop perspective and awareness through discussions and seminars on economics, politics, history, social science, development, and more.

Industry Interactions

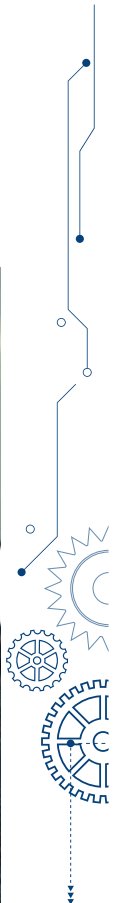
Benefit from a close and sustained dialogue with the industry. Leverage the advantages of mentorship, counselling, and work opportunities.

Out-of-Classroom Learning

Explore JKLU centres of excellence for unique learning experiences.

Experiential and Tech-Driven Learning

Learn by doing. Apply classroom concepts to real-world challenges.



Programmes

B.TECH BACHELOR OF TECHNOLOGY

The B.Tech. programmes at the Institute of Engineering and Technology (IET), JK Lakshmipat University, seamlessly incorporates the latest technological advancements with cutting-edge pedagogical methods. These programmes are meticulously crafted to prepare graduates for the future, striking a perfect balance between job readiness and academic inquiry through a project-based learning approach and a collaborative educational environment.

The Institute's curriculum is benchmarked with the best institutions across the world and provides students with a rich blend of interdisciplinary skills that are in high demand across industries. Additionally, students have the exceptional opportunity to spend up to four semesters at prestigious institutions such as various IITs, IIITs, and international universities, enriching their educational journey with diverse and significant experiences.



Computer Science and Engineering

The Bachelor of Technology in Computer Science and Engineering provides a rigorous education that prepares students with a solid foundation in mathematics, problem-solving, critical thinking, and programming. This programme goes beyond the traditional curriculum by integrating advanced courses in design and management, offering a holistic educational experience. Students explore a balance of core computer science disciplines and the latest in emerging technologies through innovative macro-credit courses.



Computer Science and Engineering (Artificial Intelligence)

The Bachelor of Technology in Computer Science and Engineering (Artificial Intelligence) equips students with an in-depth understanding of both foundational computer science principles and advanced artificial intelligence techniques. This programme delves into key areas such as probability, statistics, machine learning, deep learning, natural language processing, computer vision, reinforcement learning and more. Students also explore the ethical dimensions of AI and receive hands-on training in Python, C++, or Java, along with essential data structures, algorithms, and database management skills.



Computer Science and Engineering (Data Science)

The Bachelor of Technology in Computer Science and Engineering (Data Science) is tailored to prepare students for the data-driven demands of modern industries. This programme offers a robust foundation in computer science, enhanced with specialised training in data analytics, statistical modelling, and predictive analytics. Courses encompass data mining, machine learning, and big data technologies, equipping students to perform advanced data analysis and extract actionable insights from complex datasets.



Computer Science and Engineering (Cyber Security)

This programme is designed to develop students as domain specialists in Cyber Security. The students will develop skills in areas such as Network Security, Web Security, Vulnerability Assessment, Penetration Testing, Hardware Security, or Incident Response. Upon completion, students will be well-prepared for careers in various sectors, including IT, finance, government, and corporate enterprises, addressing cybersecurity issues and safeguarding digital infrastructures.



Computer Science and Design

The Bachelor of Technology in Computer Science and Design is a unique programme that marries the rigorous technical competencies of computer science and engineering with the creative and empathetic aspects of design. This programme empowers students to develop user-centric technology solutions by integrating advanced knowledge in UX/UI design, interactive media, software aesthetics, and more. Students are encouraged to approach complex technological challenges with empathy and ethics, utilising human-centric design principles to devise solutions that are sensitive to economic, socio-cultural, and environmental impacts.



Electronics and Communication Engineering (VLSI Design)

This programme is tailored to the needs of India's rapidly growing electronics and semiconductor industry. The curriculum integrates foundational concepts in electronics, communication systems, and advanced topics in digital and analog circuit design. Upon completion, students will gain proficiency in hardware description languages like Verilog and VHDL and hands-on experience with industry-standard EDA tools. This programme prepares graduates to excel in roles such as Communication Systems Design engineers, VLSI Design, Testing and Verification specialists.

M.TECH

MASTER OF TECHNOLOGY

At JK Lakshmipat University (JKLU), M.Tech in Computer Science and Engineering (CSE) programme is designed to equip students with advanced technical knowledge, research expertise, and industry-ready skills. This programme is ideal for aspiring engineers and technologists who wish to delve deeper into the ever-evolving world of computing and contribute to ground-breaking innovations.

The M.Tech in CSE is a two-year postgraduate full time programme that combines rigorous academic coursework with hands-on practical experience. The curriculum is tailored to meet the demands of the rapidly changing technology landscape, with a focus on emerging areas such as:

- Artificial Intelligence and Machine Learning
- Cloud Computing and Distributed Systems
- Data Science and Big Data Analytics
- Internet of Things (IoT) and Embedded Systems
- Cybersecurity and Blockchain Technology
- Software Engineering and DevOps

PhD

DOCTOR OF PHILOSOPHY

The PhD programme at JKLU offers intensive education in engineering and sciences to help students realise their academic goals and pursue professions of their choice. The academic disciplines in which PhD is offered at JKLU include Computer Science and Engineering (CSE), Electrical and Electronics Engineering (EEE), Mechanical Engineering (ME) and Mathematics. Research in interdisciplinary areas in academics and exploration of innovative industrial practices during the programme offer an environment of scholarship and collaborative learning to the scholars.

Developing new perspectives of analysis and interpretation through critical examination and sound judgement open new realms of innovation and research for them.

Admissions

Eligibility Criteria

B.Tech

For the B.Tech programme, applicants are required to have at least 60% in English, Maths, Physics, and Chemistry in their Class XII examination, with a specific necessity of achieving 60% in Mathematics. Eligible marks should be from examinations conducted by recognised Central/State Boards in India or those equivalent and recognised by the AIU.

M.Tech

For the M.Tech programme, candidates must secure at least 60% marks or a CGPA of 6.0/10 in their qualifying examination in engineering or a related field from a recognised university. Those with degrees in non-allied disciplines are required to provide proof of having completed basic computer science courses or passed the GATE in an allied area.

Application Process

Step 1: Application Submission

Begin your educational journey at JKLU by completing the online application form and submitting the application fee. You can access the form on our official website, jklu.edu.in. Please ensure that all required details are filled out completely and accurately to prevent any delays in the processing of your application.

Step 2: Personal Interaction

Once your eligibility is confirmed, you'll be invited to engage in a personal interaction with our faculty members. This session allows you to discuss your interests and goals, helping us understand how you can benefit from and contribute to the JKLU community.

Step 3: Accept Offer of Admission

If you are selected, you will receive an offer to join the programme. To accept this offer and secure your place, you will need to submit the required fee.

Contact Us

For further information, contact our Admissions Office:

Phone: +91 83022 23344

Email: admissions@jklu.edu.in

Fee Structure

Tuition Fee

B.Tech

Duration
4 Years

Academic Fee (Annual)
₹ 2,80,000

M.Tech

Duration
2 Years

Academic Fee (Annual)
₹ 1,80,000

Hostel Fee (in INR)

Type of Room	Double Sharing / Year		Triple Sharing / Year	
	AC	Non-AC	AC	Non-AC
Hostel Fee	₹84,000	₹68,000	₹73,500	₹60,000
Utility Charges	₹33,000	₹18,000	₹27,500	₹15,000
Total	₹1,17,000	₹86,000	₹1,01,000	₹75,000

Mess Advance (to be adjusted as per actual) – INR 58,000 per annum

Transport Fee:

For students commuting from Jaipur City to the JKLU campus, we provide air-conditioned bus service at an annual fee of INR 50,000.

Note:

- A one-time, **non-refundable** admission fee of **INR 5,000** will be charged at the time of admission.
- The university reserves the right to increase academic fee by 10 per cent annually.
- A one-time, **refundable** caution deposit of **INR 10,000** is required at the time of admission.
- For hostel students, a **refundable** security deposit of **INR 5,000** will be charged with the first year's fees and is refundable upon leaving the hostel.
- Hostel, transportation and other charges are subject to yearly revision.

Scholarships

Scholarships are awarded to B.Tech applicants who demonstrate academic excellence, evidenced by their Class XII percentage, JEE Mains exam results, or CUET scores. Eligibility for these scholarships is based on the criteria listed below.

B. Tech Merit Scholarships			
Scholarship Range (%)	Class XII (%) (Specified Subjects)*	JEE Mains Score (Percentile)	CUET Score (3 Specified Subjects)**
100%	N/A	Above 95	N/A
75%	N/A	> 90 and <= 95	N/A
50%	Above 95	> 85 and <= 90	551 – 600
30%	> 90 and <= 95	> 80 and <= 85	501 – 550
20%	> 85 and <= 90	> 75 and <= 80	451 – 500
10%	75 and <= 85	70 and <= 75	401 – 450

*Class XII Standard Subjects: Physics, Chemistry, Mathematics and English

**B.Tech CUET Subjects: English, Mathematics, and one domain-specific subject

Other Scholarships

- Sibling/Alumni:** A 20% scholarship will be awarded to applicants who are siblings of JKLU students or alumni, or alumni pursuing a second degree.
- Single Girl Child:** Single girl children with no siblings will be eligible for a 10% scholarship.
- Special Category:** A 10% scholarship will be awarded to applicants who are wards of defense personnel, SC/ST, differently abled students, students from Northeast, Union Territories (except Delhi and Chandigarh) and students from JKO schools.
- Extra-Curricular and Co-Curricular:** A special committee will evaluate and award scholarships on a case-by-case basis to applicants demonstrating exceptional performance in sports or other areas.
- Special Circumstances:** Awarded on a case-by-case basis, subject to governing body approval, this scholarship supports wards of JKLU staff, entities of the JK Organisation, or applicants not covered by the above categories.

Considerations

- Scholarship Eligibility:** If a student qualifies for more than one scholarship, only the higher value scholarship will be applied.
- Sibling/Alumni Discount:** A 20% discount is available for siblings of alumni who have graduated from JKLU with a full-time degree. This discount applies only to new enrollments, not to siblings already enrolled.
- Scholarship Applicability:** Scholarships apply solely to academic fees.



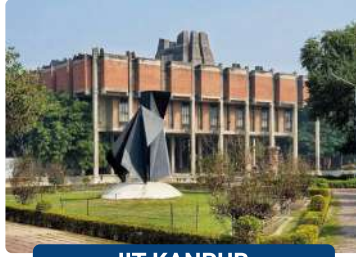
ACADEMIC COLLABORATIONS



Student Mobility Programme with Top IITs, IIITs & Leading Global Institutions



IIT DELHI



IIT KANPUR



IIT GANDHINAGAR



BITS PILANI



IIT JODHPUR



IIT JAMMU



IIIT HYDERABAD



IIIT DELHI



IIT ROPAR

and many more...

JKLU offers its students the chance to join the Student Mobility Programme at prestigious institutions like IITs, IIITs, and other renowned engineering colleges. This programme allows students in their second and third years to study at an IIT or IIIT, gaining exposure to diverse academic settings and curricula.

During their exchange, students are exempt from paying tuition fees to JKLU, enhancing their learning experience without an additional financial burden.

International Collaborations



University of Florida



Amsterdam University
of Applied Sciences



St. Cloud State
University



Hanyang University



UNIVERSITY OF
BIRMINGHAM

University of Birmingham



HANYANG UNIVERSITY
ERICA CAMPUS

Hanyang University,
South Korea (ERICA Campus)



Edinburgh Napier
University



Carleton University



University of
South Carolina



Michigan State
University

Through our academic partnerships with some of the world's leading institutions, JK Lakshmipat University enables students to participate in semester exchange programmes at top-tier universities in India and abroad.

These programmes provide access to a wide range of academic resources, renowned faculty, and diverse student communities. They are designed not only to enrich students' academic experiences but also to broaden their perspectives and enhance their employability through a global outlook and practical international experience.

Students are not required to pay tuition fee to JKLU during the course of their study at the partner institution.

Placement Highlights



**22.5 LPA
Highest CTC**



**8.10 LPA
Average CTC**



**Up to 100%
Placement***



**Top 10% Average
CTC 18.07 LPA**

**2024 Placements for B.Tech Programme*

| Top Recruiters



and many more...

Advanced Labs

Our Computer Science Labs are equipped with state-of-the-art technology, including advanced CPUs and GPUs. These facilities offer a transformative learning environment where theoretical knowledge meets practical application, enabling students to deepen their understanding and proficiency in complex concepts.



AI Lab

The Artificial Intelligence Lab at JKLU is a cutting-edge facility dedicated to research, innovation, and education in AI and machine learning. Equipped with advanced computing resources, high-performance GPUs, and AI development tools, the lab fosters hands-on learning and groundbreaking projects.



Data Science Lab

The Data Science Lab features high-end PCs specifically tailored for research work, machine learning tasks, and data model training. It allows the students and faculty to pursue research in areas of artificial intelligence and machine learning.



Computer Network and Cyber Security Lab

Equipped with the necessary hardware and software (Wireshark, Packet Tracer, NS3), this lab provides a platform for learning about various aspects of networks and cyber security, from basic configurations to advanced protocols and security measures.



AR/VR Lab

The AR/VR Lab, equipped with HTC Vive and Meta Quest devices, remains at the forefront of technology, fostering creativity and innovation in virtual environments. Students and researchers explore applications in virtual prototyping, game development, data visualisation, and immersive learning experiences.



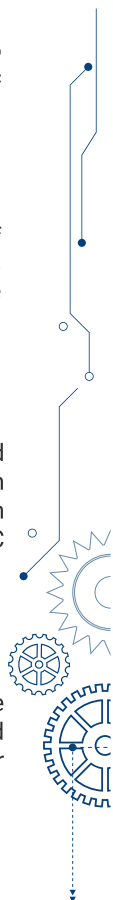
Circuit Design and VLSI Lab

This lab offers a dynamic environment where students delve into the intricate world of integrated circuit design, exploring cutting-edge technologies and methodologies. Students can work from fundamental digital circuits to VLSI circuits. This lab offers circuit design tools, simulation environment, FPGA Prototyping (Zybo Zynq- 7000 development board, Nexyx 4DDR Artix-7), ASIC Design Flow.



Communication Lab

The Communication Lab is equipped with the latest technology and resources to support a wide range of research and experimentation in Digital Communication, Microwave Engineering and Signal Processing. We have AWS bracket access for Quantum Computing which is being used for projects in Quantum Cryptography and Communication.





Embedded System and IoT Lab

The Embedded Systems and IoT Lab serves as a beacon for innovation, research, and practical implementation. This lab is equipped with a diverse range of microcontroller platforms including Arduino, Raspberry Pi, ESP32, and TIVA series, enabling users to develop projects spanning from simple prototypes to complex embedded systems.



Smart Grid Lab

The Smart Grid Lab focuses on tackling traditional grid challenges for a sustainable energy future. Equipped with energy test benches, it features a 1-phase microgrid setup. This setup includes a grid emulator, 40 W solar panel, 30 W wind emulator, converters, hybrid energy storage, and programmable load.



Mechanical Workshop

A comprehensive workshop, a hub where innovation flourishes amidst a rich array of equipment. In this space, students harness the transformative power of machinery spanning from traditional to cutting-edge technologies. From the precision of the lathe and the craftsmanship of carpentry to the robustness of the smithy, foundational skills are honed with each project undertaken. The laser cutter brings forth intricacy and finesse, while casting molds visions into tangible forms.



Automobile Engineering Lab

The laboratory facilitates hands-on exploration of vehicle frameworks, components, engine assembly-disassembly, performance evaluation, and emissions analysis. With cutting-edge equipments, students delve into engine calibration, fuel injection analysis, and study various vehicle types including diesel, petrol, hybrid models, and alternative fuels, preparing them for diverse roles in the automotive sector.



Atal Incubation Centre-JKLU

The Atal Incubation Center -JK LakshmiPat University was established with the support of Atal Innovation Mission (AIM), NITI Aayog and JK LakshmiPat University in 2019.

AIC-JKLU is a dynamic platform for fostering innovative ideas, promoting entrepreneurship, and supporting innovators. It offers a comprehensive range of resources and services designed to help aspiring entrepreneurs transform their ideas into successful ventures. The Centre provides an environment conducive to creativity and innovation, encouraging and guiding students to take the entrepreneurial path.

From ideation to execution, AIC-JKLU offers personalised guidance from experienced mentors to help refine and develop business ideas, as well as cutting-edge facilities to support research and development. It provides support at every stage.

AIC-JKLU has been consistently rated as one of the top-performing Incubation Centers in the AIM network. The AIC, due to its association with JKLU, is uniquely able to provide start-ups access to interdisciplinary resources such as high-end computing facilities, design facilities, and engineering labs coupled with expert resources in the areas of business, technology, and design.

AIC Highlights

70+

**Start-Ups
Incubated**

33+

Partners

5 Cr+

Funds Granted

43+

Mentors

100+

**Events & Training
Programmes
Organised**



AIMA BizLab

JKLU hosts AIMA BizLab, a virtual lab designed to offer students hands-on experience on management concepts. As a result, students at JKLU can utilise the AIMA BizLab software for simulating diverse management strategies. Such a simulation exercise exposes students to real economic, environmental and business issues related to finance, operations, marketing and other business functions. It empowers them to develop strategy, execute tactics and analyse competitors as they go through the pains and gains of running a company in a hypothetical environment and see the impact of their decisions on business.

Just like the laboratories for other education fields, the AIMA BizLab software allows students to “experiment” with various management strategies and tactics on a given scenario. Specifically designed while keeping in mind the learning habits of the new generation of students, the AIMA BizLab provides experiential learning experience to them.

By offering a realistic and dynamic learning environment, AIMA BizLab allows students to gain practical insights into the business world. It also helps in honing their analytical and strategic thinking skills, preparing them to tackle real-world business challenges effectively.

Campus Life

At JK Lakshmipat University, campus life thrives as a vibrant tapestry of experiences, where every corner pulsates with energy and opportunity. Here, students immerse themselves in a dynamic community, enriched by a kaleidoscope of activities tailored to their passions and interests. From spirited academic debates to collaborative projects, cultural festivals, and sports competitions, our

campus buzzes with excitement and creativity. It's a place where friendships are forged, ideas are exchanged, and personal growth flourishes. With state-of-the-art facilities, lively student clubs, and a supportive network of faculty and staff, JKLU's campus offers an environment where students can explore, discover, and thrive.



Community & Clubs

The university environment at JK LakshmiPat University is brimming with outstanding opportunities, abundant resources, and unwavering support for students to embark on new adventures, build meaningful connections, and nurture their creativity. From a diverse array of clubs and organisations to cater to every interest, JKLU ensures there's something for everyone to engage with and enjoy.



Technical Club



Photography Club



Community Development Club



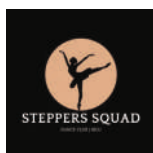
Coding Club



Design Club



Business/ Finance Club



Dance Club



Media Club



Drama Club



Robotic Club



ART Club

Festivals



Aarambh

The 12-day residential orientation programme features power talks, workshops, club activities, and an adventurous hiking trip. Led by dedicated organisers, the programme fosters a sense of belonging and skill development among newly inducted students of JK LakshmiPat University.



Parichay

The annual fresher's party aims to craft an indelible welcome for the latest additions to our academic family. It is a splendid canvas for our newly inducted students to display our institution's rich cultural heritage while embracing the contemporary spirit of our diverse student body.



Sabrang

Our annual cultural fest celebrates diversity and talent. With over 30 activities and 1000+ participants nationwide, it fosters creativity, teamwork, and cultural exchange. From trading challenges to DJ nights, it's a vibrant showcase of student excellence and community spirit.



Spardha

The three-day event hosts a variety of inter-university outdoor and indoor sports competitions on campus, including cricket, football, basketball, volleyball, kabaddi, crossfit, and athletics. It showcases the sportsmanship and team spirit of the students, bringing them together in a spirited display of athletic prowess and camaraderie across universities.



Hack JKLU

Our annual hackathon isn't just about coding; it's a fusion of innovation, teamwork, and inspiration. With engaging workshops, expert talks, and cultural performances, it cultivates creativity and problem-solving skills. Participants collaborate, learn, and innovate, leaving a lasting impact on our community's culture of innovation.



Jaipur Design Week

Jaipur Design Week (JDW) celebrates creativity and innovation, bringing together designers, professionals, and enthusiasts worldwide. Through workshops, discussions, and exhibitions, it nurtures talent, fosters collaboration, and explores the transformative role of design.

Modern Facilities



Mess

The campus mess at JKLU is dedicated to providing hygienic and healthy dining options. It serves a variety of nutritious meals in a clean and welcoming environment, fostering a sense of community. Managed collaboratively by students and faculty, the mess ensures dining is not just about food, but also about wellness and connection.



Hostels

Experience the comfort of on-campus living at JKLU. Our spacious hostels are designed with modern living quarters and vibrant communal areas that encourage bonding and create a warm, home-like atmosphere. It's a space where students can foster friendships and create lasting memories while enjoying the convenience of campus life.



Sports

Sports forms an integral part of life at JKLU. From inter-university tournaments to intramural events, there's something for everyone. Our facilities cater to a wide range of interests, including outdoor sports like cricket and basketball, as well as indoor games such as chess and table tennis, ensuring a vibrant and active campus culture.



Fitness Centre

Our state-of-the-art fitness center is equipped with the latest training equipment to help students maintain an active and healthy lifestyle. Whether it's strength training, cardio, or functional workouts, the center supports a balanced and holistic approach to physical well-being.



Medical Centre

The on-campus Medical Centre at JKLU provides 24/7 qualified medical assistance, ensuring the health and safety of our community. Regular health check-ups, follow-up care, and wellness services are readily available. For emergencies, we offer a dedicated ambulance service in collaboration with Blue Circle Medi Services Pvt. Ltd.



Cafeteria

The multi-cuisine cafeteria at JKLU is the perfect spot to unwind and recharge. Whether you're grabbing a quick snack between classes or enjoying a relaxed meal with friends, the cafeteria serves a wide variety of delicious dishes in a lively, inviting atmosphere that makes every dining experience enjoyable.

JKLU Laureate Awards

Since 2014, JKLU is honouring nationally and internationally acclaimed and outstanding achievers with JKLU Laureate Award each year not only to venerate these accomplished leaders from all walks of life but also to facilitate the young minds in our country to identify their role models and emulate them.



Dr. K. Kasturirangan, former Member of Rajya Sabha and former Chairman of the Indian Space Research Organisation, receiving the JKLU Laureate Award 2014 from Shri Bharat Hari Singhania, President, JK Organisation & Chancellor, JKLU.



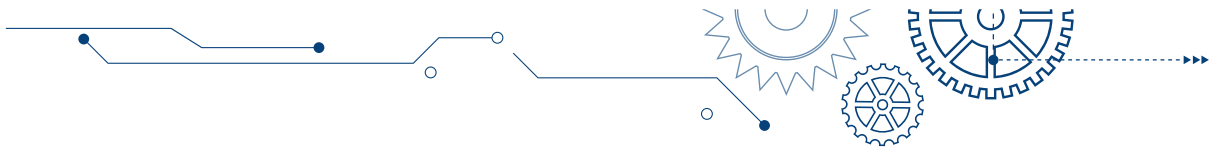
Lord Meghnad Desai, renowned economist and Padma Bhushan awardee receiving the JKLU Laureate Award 2015 from Shri Bharat Hari Singhania, President, JK Organisation & Chancellor, JKLU, in the presence of JKLU Pro Chancellor, Shri R.P. Singhania, and former JKLU Vice Chancellor, Dr. R.L. Raina.



Nobel Peace Prize Awardee and child rights activist, Shri Kailash Satyarthi, receives the JKLU Laureate Award 2016 from Shri Bharat Hari Singhania, President, JK Organisation & Chancellor, JKLU, in the presence of JKLU Pro Chancellor, Shri R.P. Singhania, and former JKLU Vice Chancellor, Dr. RL Raina.



World-renowned business consultant, author, and speaker Dr. Ram Charan receives the JKLU Laureate Award 2017 from Shri Bharat Hari Singhania, President, JK Organisation & Chancellor, JKLU, and other dignitaries.



Former President of India, Late Pranab Mukherjee, received the JKLU Laureate Award 2018 from Shri Bharat Hari Singhania, President, JK Organisation & Chancellor, JKLU, in the presence of JKLU Pro Chancellor, Shri R.P. Singhania, and former JKLU Vice Chancellor, Dr. RL Raina.



Former Prime Minister of India, Late Dr. Manmohan Singh, received the JKLU Laureate Award 2019 from Shri Bharat Hari Singhania, President, JK Organisation & Chancellor, JKLU in the presence of JKLU Pro Chancellor, Shri R.P. Singhania, and former JKLU Vice Chancellor, Dr. RL Raina.



Dr. R.A. Mashelkar, world-renowned scientist, and former Director General of CSIR, receiving the JKLU Laureate Award 2023 from JKLU Pro Chancellor, Shri Harsh Pati Singhania, in the presence of JKLU Vice Chancellor, Dr. Dheeraj Sanghi, and former JKLU Pro-Vice Chancellor, Mr. Asheesh Gupta.



Shri Deepak S Parekh, Former Chairman, HDFC receiving the JKLU Laureate Award 2024 from JKLU Pro Chancellors, Shri H.P. Singhania and Shri R.P. Singhania in the presence of JKLU Vice Chancellor, Dr. Dheeraj Sanghi.

JK Lakshmipat University

Near Mahindra SEZ, Mahapura,
Ajmer Road, Jaipur- 302 026, Rajasthan, India

☎ 830 222 3344

✉ admissions@jklu.edu.in



SCAN TO APPLY

www.jklu.edu.in

Follow us on

Instagram LinkedIn YouTube X Facebook / [jklu_jaipur](https://www.jklu.edu.in)

